



Liquid-tight junction box **JOIBOX JB-WSB**

Slim blank type

RoHS2



For versatile application



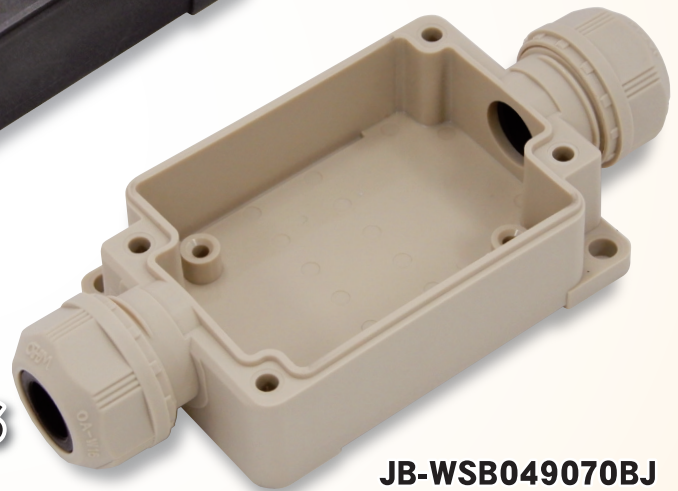
JB-WSB028070EBJ



JB-WSB034070E



Weatherproof Oilproof Color



JB-WSB049070BJ

Protect connected wires from water and dust!

Example of use

For single touch connector relays



For relay connectors



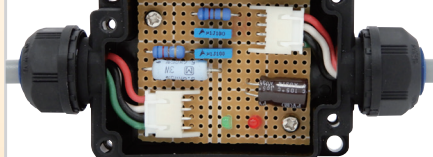
For bullet terminals



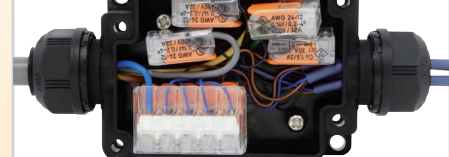
For closed-end connectors



For circuit board



For branch wiring



OHM ELECTRIC CO., LTD.

1911 O-01

Model & Specifications

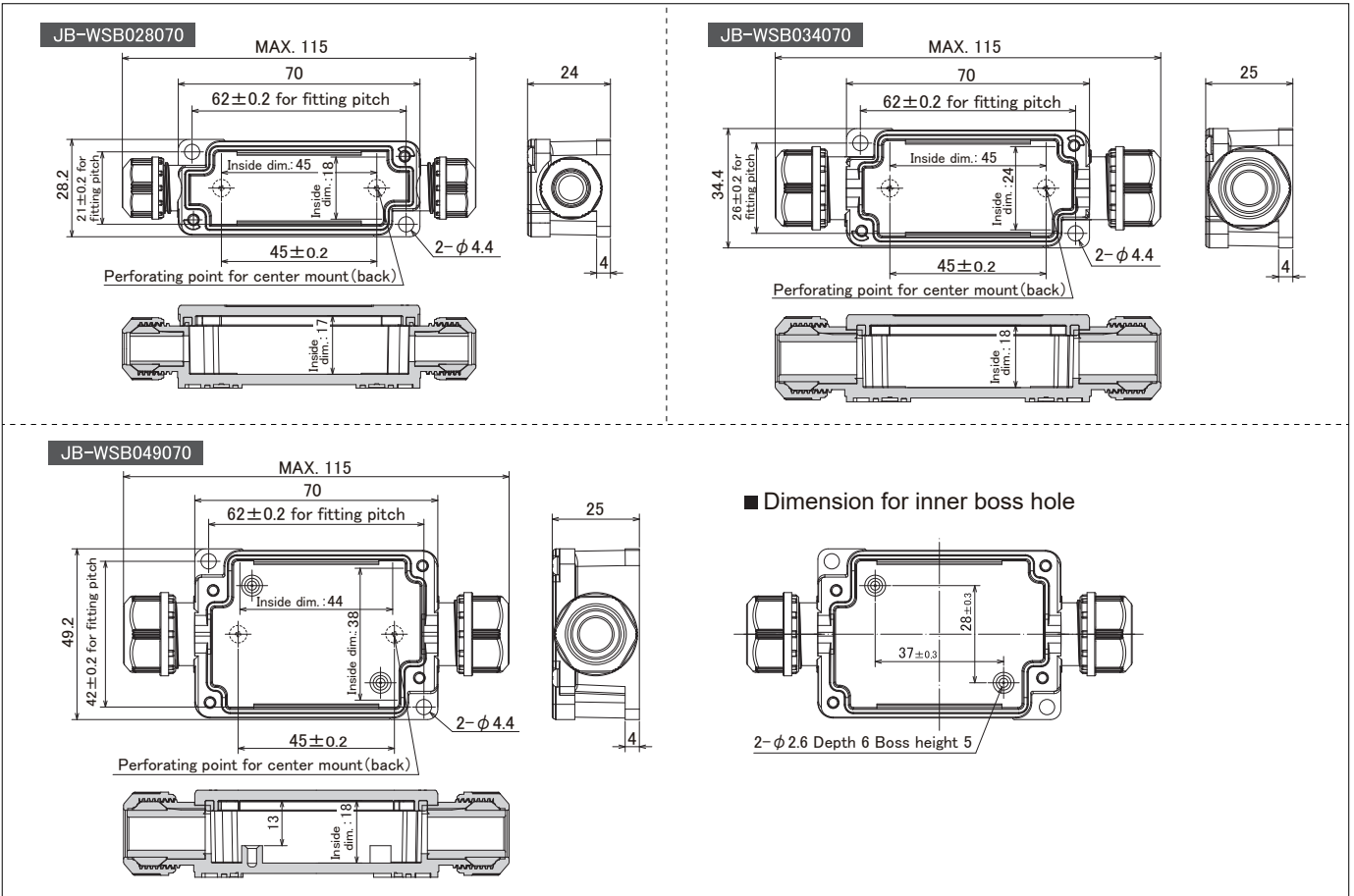
Weatherproof  Rubber bushing: Blue ※ Use oilproof type in oily environment.

Model		Working temp.	Applicable cable dia. (mm)	Weight	Q'ty per package
Black	Beige				
JB-WSB028070E	JB-WSB028070EBJ	-25 to + 80°C	φ 5 to 7	33g	1 pc
JB-WSB034070E	JB-WSB034070EBJ		φ 6 to 9	45g	
JB-WSB049070E	JB-WSB049070EBJ		φ 6 to 9	58g	

Oilproof  Rubber bushing: Black

Model		Working temp.	Applicable cable dia. (mm)	Weight	Q'ty per package
Black	Beige				
JB-WSB028070	JB-WSB028070BJ	-25 to + 80°C	φ 5 to 7	33g	1 pc
JB-WSB034070	JB-WSB034070BJ		φ 6 to 9	45g	
JB-WSB049070	JB-WSB049070BJ		φ 6 to 9	58g	

Dimensional drawing



Applicable rubber bushing (optional)

< JB-WSB028070** >

Model for rubber bushing		Applicable cable dia (mm)	Q'ty per package
For weatherproof	For oilproof		
G15M-04E	G15M-04	φ 2 to 4	10 pcs
G15M-05E	G15M-05	φ 3 to 5	
G15M-302E	G15M-302	φ 2.4 to 3 (2 holes)	

< JB-WSB034070**/JB-WSB049070** >

Model for rubber bushing		Applicable cable dia (mm)	Q'ty per package
For weatherproof	For oilproof		
G13-09BE ※	G13-09B ※	φ 4 to 6	10 pcs
G11-11E	G11-11	φ 9 to 11	
G11-334E	G11-334	φ 2.2 to 3.3 (4 holes)	
G11-402E	G11-402	φ 3 to 4 (2 holes)	

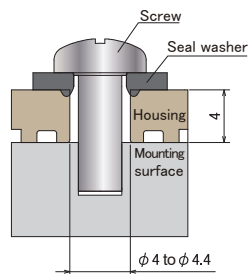
※ Use it by inserting into each rubber bushing in junction box.

Mounting method in case of using center holes

By using seal washers meets IP67 protectivity.

※ Seal washers are not included.

< Enlarged figure of mounting part >



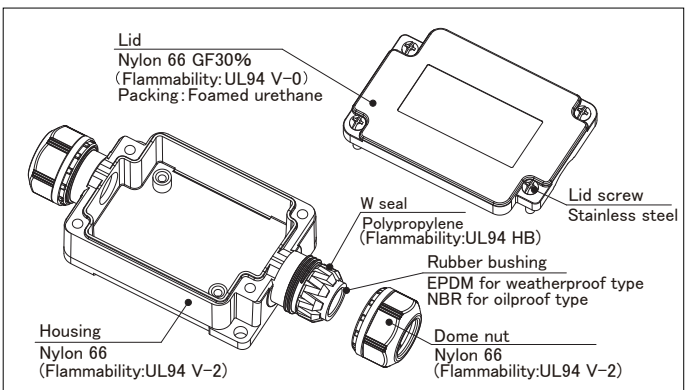
【Recommendation】

Maker: MISUMI Model: GSWMF4 (2 pcs)
Outer diameter: φ 10.2 Thickness: 1.3mm
Drilling point diameter: φ 4 to 4.4

【Cautions】

- Do not use semi screws or flat head screws as M4 fixed screw.
- Select M4 fixed screw considering the thickness of the back side of the housing and that of seal washers.
- Check the performance of seal washers by yourselves if you use other seal washers than our recommendation.

Material



OHM ELECTRIC CO., LTD.

7000-21 Nakagawa, Hosoe, Kita-ku
Hamamatsu, Shizuoka 431-1304, JAPAN
TEL : +81-53-522-5562 FAX: +81-53-523-2362
e-mail : info@ohm.co.jp

URL : <https://www.ohm.jp/>