

MIST  
CATCH

Non-filter  
oil mist  
collector

Electrostatic  
oil mist  
collector

Filter  
oil mist  
collector

Option

Auto-cleaning  
unit

Non-filter Oil mist collector

# OMC-N205 (H)

Industry-leading collection efficiency as a non-filter unit



Top runner motor

RoHS



Collection method



Features



## Model/Specifications

Model	OMC-N205	OMC-N205H
Max. airflow *1	4.5 / 5m <sup>3</sup> /min	
Max. static pressure*1	0.59 / 0.85kPa	
Collection efficiency	99% or more (2μm or larger)	99% or more (1μm or larger)
Rated voltage	3-phase, 200VAC, 50Hz/200-220V, 60Hz	
Motor output rating	0.4kW (2P)	
Motor efficiency *2	76.0 / 76.0-77.0%	
Current consumption*1	1.9 / 1.7 -1.7A	
Working temperature	0 to +40°C	
Max. working humidity	85%RH, free from condensation	
Noise	66/70dB (A)	
Max. suction air temp.	+80°C	
Conformity	EMC directive	EMI:EM61000-6-4 EMS:EN61000-6-2
	EMD	EN ISO/12100 : 2010 EN60204-1 : 2006+A1 : 2009 Overvoltage category II, Pollution level 3
	Environment	RoHS2
Suction port diameter	φ 98mm	
Paint color	Powder coating, Ivory (10GY9/1 equivalent) and Light green (10GY8/4 equivalent)	
Weight	25.0kg	
Drain port	φ 31 pipe	
Standard accessory	φ 32 drain hose 2m , 1 drain hose band, 4 anti-vibration rubber, 1 maintenance sticker, 1 instruction manual	

\*1 Rated value in 25°C air temperature

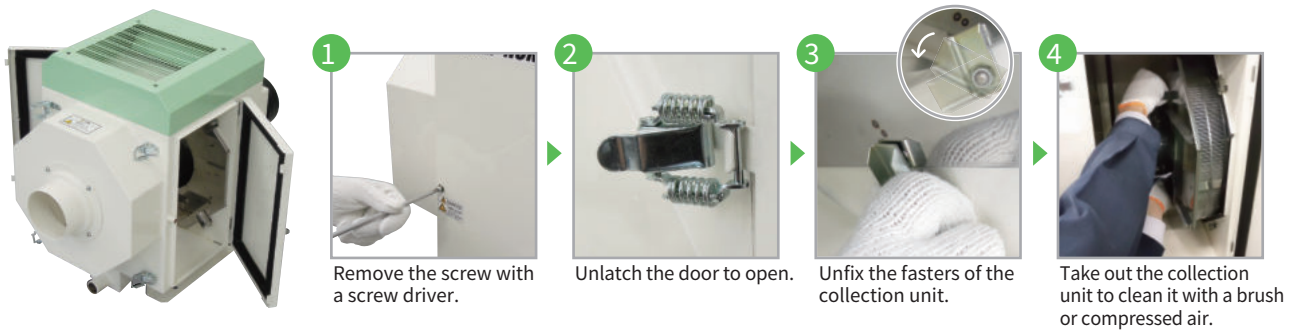
\*2 Efficiency value in a motor single body

### ⚠ Caution

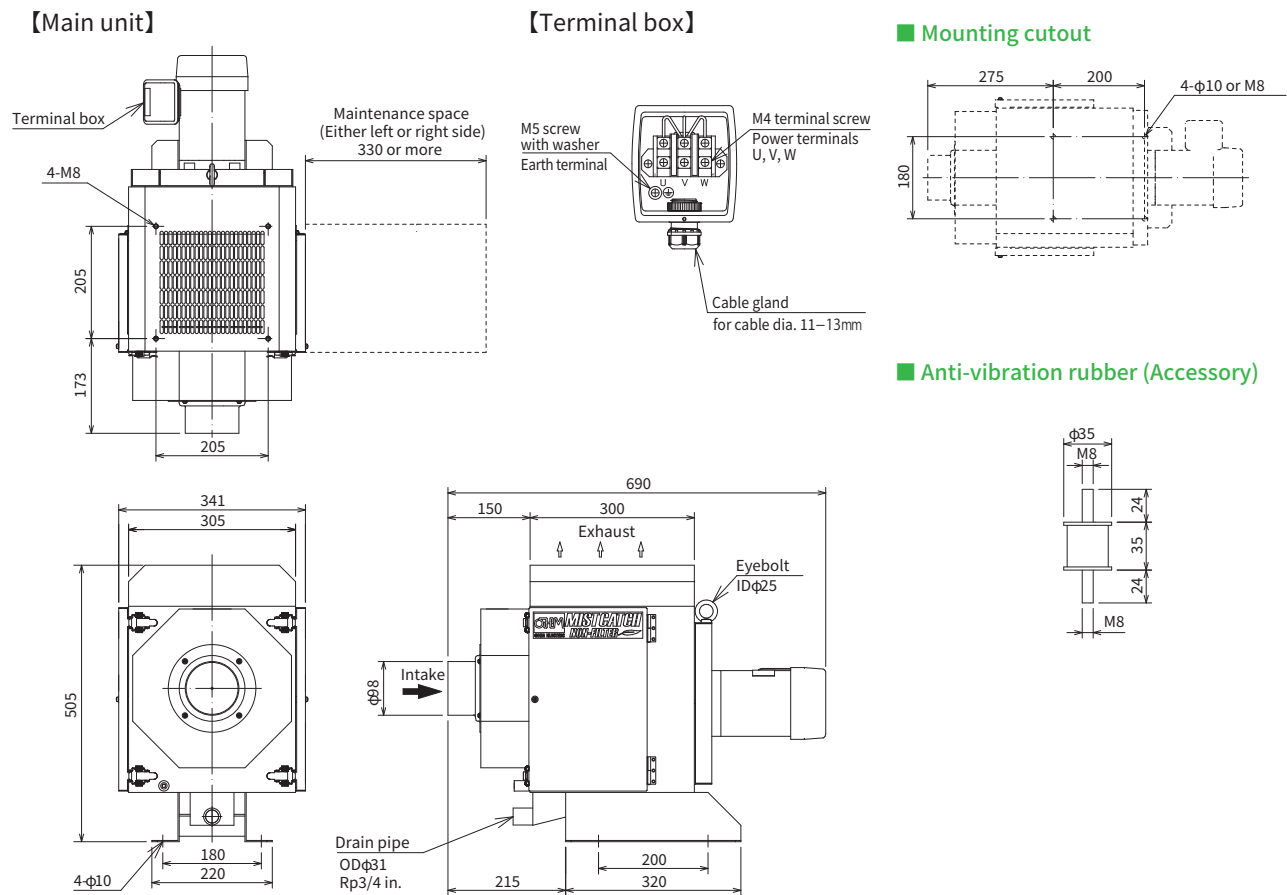
- Be sure to read the instruction manual carefully before use.
- This product is intended for collecting general watersoluble and oil mist that generates during production process using various machine tools. Never have it inhale the following substances.
  - Ignition sources and fire sparks generated in machine processing
  - Flammable substances such as gasoline, thinner, benzine, kerosene and others as well as oil and cleaning liquid with an ignition point 80 degrees C or below,
  - Explosive substances such as aluminium, magnesium and titan as well as materials ridden with those substances,
  - Flammable liquid, mist and materials ridden with these substances,
  - Corrosive and adhesive substances and hazardous gas or air with a lot of unusual substances
  - Dust
  - Hot air exceeding 80 deg. C.
  - Large amount of liquid
  - Substances that remarkably accelerate rusting of metals or aging of plastics

- This product should not be used in an atmosphere which contains chlorine, sulfuric or fluorine gasses, oxalic acid, xylene, or methyl tetrachloride and the like.
- Tampering or repairing the product should be strictly avoided. Please contact us for repairing service.
- Precision apparatuses should not be arranged near the exhaust port where fine particles may fall on.
- Do not operate the product with its terminal box uncovered.
- Electrical connection should be done via an appropriate circuit breaker
- Indoor use only. The altitude of the site of use should be lower than 1000m.
- The site of use should be free from vibration or impact.
- Electrical works required for mounting the product should be done by professionals or qualified personnel.
- Make sure that the packaging is not damaged on delivery. Damages during transportation may lead to product failure. In case any damage is found, contact us immediately.

Maintenance

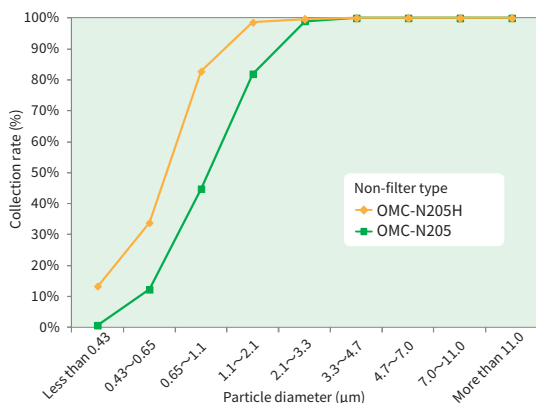


Outline drawing

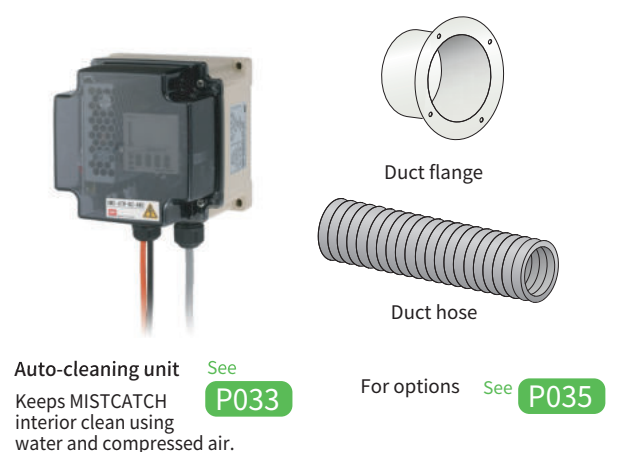


Collection rate

Test oil : Water-insoluble cutting oil  
 Measured by : Low Volume Air Sampler type AN-200



Option



MIST  
CATCH

Non-filter  
oil mist  
collector

Electrostatic  
oil mist  
collector

Filter  
oil mist  
collector

Option

Auto-cleaning  
unit

Non-filter Oil mist collector

# OMC-N210(H)

Industry-leading collection efficiency as a non-filter unit



Top runner motor

RoHS



Collection method



Features



## Model/Specifications

Model	OMC-N210	OMC-N210H
Max. airflow *1	8 / 10m <sup>3</sup> /min	
Max. static pressure*1	1.13 / 1.55kPa	
Collection efficiency	99% or more (2μm or larger)	99% or more (1μm or larger)
Rated voltage	3-phase, 200VAC, 50Hz/200-220V, 60Hz	
Motor output rating	0.75kW (2P)	
Motor efficiency *2	81.5 / 81.1-82.5% IE3 / IE3-IE3	
Current consumption*1	3.1 / 3.0-2.8A	
Working temperature	0 to +40°C	
Max. working humidity	85%RH, free from condensation	
Noise	70/74dB(A)	
Max. suction air temp.	+80°C	
Conformity	EMC directive	EMI:EM61000-6-4 EMS:EN61000-6-2
	EMD	EN ISO/12100 : 2010 EN60204-1 : 2006+A1 : 2009 Overvoltage category II, Pollution level 3
	Environment	RoHS
Suction port diameter	φ123mm	
Paint color	Powder coating, Ivory (10GY9/1 equivalent) and Light green (10GY8/4 equivalent)	
Weight	40.0kg	
Drain port	φ31 pipe	
Standard accessory	2m φ32 drain hose, 1 drain hose band, 4 anti-vibration rubber, 1 maintenance sticker, 1 instruction manual	

\*1 Rated value in 25°C air temperature

\*2 Efficiency value in a motor single body

### ⚠ Caution

- Be sure to read the instruction manual carefully before use.
- This product is intended for collecting general water-soluble and oil mist that generates during production processes using various machine tools. Never have it inhale the following substances.
  - Ignition sources and fire sparks generated in machine processing
  - Flammable substances such as gasoline, thinner, benzene, kerosene and others as well as oil and cleaning liquid with an ignition point 80 degrees C or below,
  - Explosive substances such as aluminum, magnesium and titanium as well as materials laden with those substances,
  - Flammable liquid, mist and materials laden with these substances,
  - Corrosive and adhesive substances and hazardous gas or air with a lot of unusual substances
  - Dust
  - Hot air exceeding 80 deg. C.
  - Large amount of liquid
  - Substances that remarkably accelerate rusting of metals or aging of plastics

- This product should not be used in an atmosphere which contains chlorine, sulfuric or fluorine gases, oxalic acid, xylene, or methyl tetrachloride and the like.
- Tampering or repairing the product should be strictly avoided. Please contact us for repairing service.
- Precision apparatuses should not be arranged near the exhaust port where fine particles may fall on.
- Do not operate the product with its terminal box uncovered.
- Electrical connection should be done via an appropriate circuit breaker
- Indoor use only. The altitude of the site of use should be lower than 1000m.
- The site of use should be free from vibration or impact.
- Electrical works required for mounting the product should be done by professionals or qualified personnel.
- Make sure that the packaging is not damaged on delivery. Damages during transportation may lead to product failure. In case any damage is found, contact us immediately.

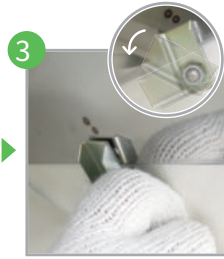
**Maintenance**



1 Remove the screw with a screw driver.



2 Unlatch the door to open.



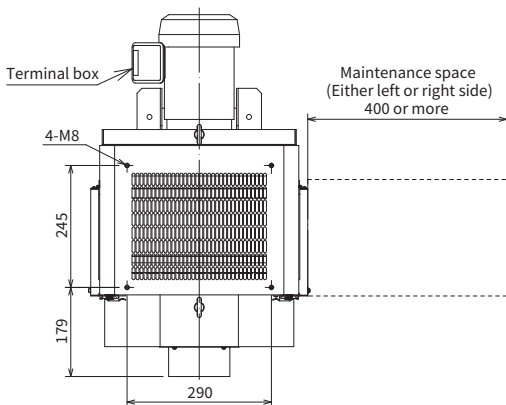
3 Unfix the fasters of the collection unit.



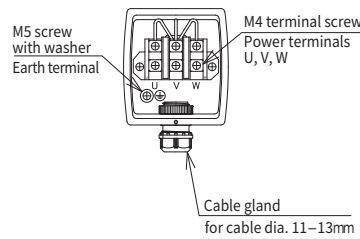
4 Take out the collection unit to clean using a brush or compressed air.

**Outline drawing**

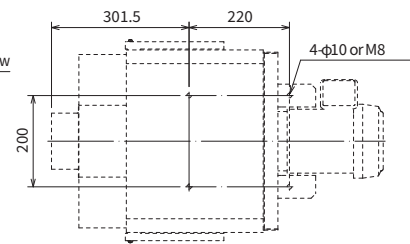
**[Main unit]**



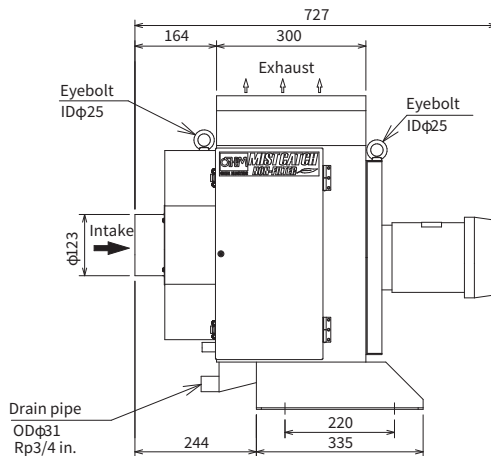
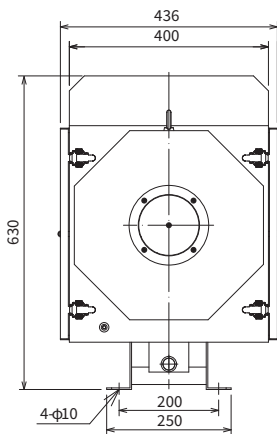
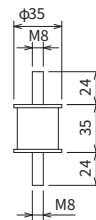
**[Terminal box]**



**Mounting cutout**

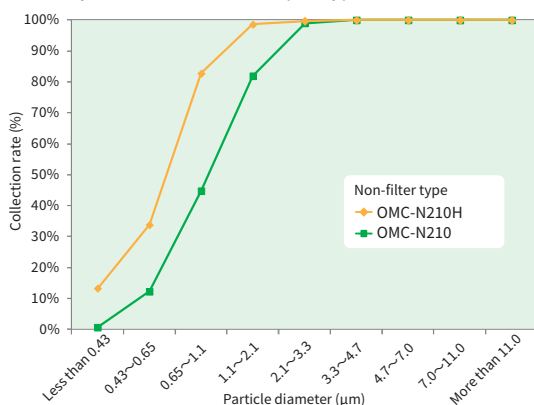


**Anti-vibration rubber (Accessory)**



**Collection rate**

Test oil : Water-insoluble cutting oil  
 Measured by : Low Volume Air Sampler type AN-200

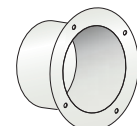


**Option**

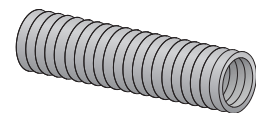


**Auto-cleaning unit**  
 Keeps MISTCATCH interior clean using water and compressed air.

**P033**



Duct flange



Duct hose

For options See **P035**

MIST  
CATCH

Non-filter  
oil mist  
collector

Electrostatic  
oil mist  
collector

Filter  
oil mist  
collector

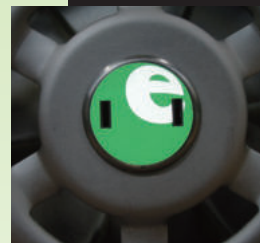
Option

Auto-cleaning  
unit

Non-filter Oil mist collector

# OMC-N215 (H)

Industry-leading collection efficiency as a non-filter unit



Top runner motor

RoHS



Collection method



Features



## Model/Specifications

Model	OMC-N215	OMC-N215H
Max. airflow *1	14.5 / 16.5 m <sup>3</sup> /min	
Max. static pressure*1	1.57 / 2.17 kPa	
Collection efficiency	99% or more (2µm or larger)	99% or more (1µm or larger)
Rated voltage	3-phase, 200VAC, 50Hz/200-220V, 60Hz	
Motor output rating	1.5kW (2P)	
Motor efficiency *2	85.8 / 85.6-86.0% IE3/IE3-IE3	
Current consumption*1	5.6 / 5.6-5.1A	
Working temperature	0 to +40°C	
Max. working humidity	85%RH, free from condensation	
Noise	72/76dB(A)	
Max. suction air temp.	+80°C	
Conformity	EMC directive	EMI:EM61000-6-4 EMS:EN61000-6-2
	EMD	EN ISO/12100 : 2010 EN60204-1 : 2006+A1 : 2009 Overvoltage category II, Pollution level 3
	Environment	RoHS
Suction port diameter	φ 148mm	
Paint color	Powder coating, Ivory (10GY9/1 equivalent) and Light green (10GY8/4 equivalent)	
Weight	57.0kg	
Drain port	φ 31 pipe	
Standard accessory	φ 32 drain hose 2m, 1 drain hose band, 4 anti-vibration rubber, 1 maintenance sticker, 1 instruction manual	

\*1 Rated value in 25°C air temperature

\*2 Efficiency value in a motor single body

### ⚠ Caution

- Be sure to read the instruction manual carefully before use.
- This product is intended for collecting general watersoluble and oil mist that generates during production process using various machine tools. Never have it inhale the following substances.
  - Ignition sources and fire sparks generated in machine processing
  - Flammable substances such as gasoline, thinner, benzin, kerosene and others as well as oil and cleaning liquid with an ignition point 80 degrees C or below,
  - Explosive substances such as aluminium, magnesium and titan as well as materials ridden with those substances,
  - Flammable liquid, mist and materials ridden with these substances,
  - Corrosive and adhesive substances and hazardous gas or air with a lot of unusual substances
  - Dust
  - Hot air exceeding 80 deg. C.
  - Large amount of liquid
  - Substances that remarkably accelerate rusting of metals or aging of plastics

- This product should not be used in an atmosphere which contains chlorine, sulfuric or fluorine gasses, oxalic acid, xylene, or methyl tetrachloride and the like.
- Tampering or repairing the product should be strictly avoided. Please contact us for repairing service.
- Precision apparatuses should not be arranged near the exhaust port where fine particles may fall on.
- Do not operate the product with its terminal box uncovered.
- Electrical connection should be done via an appropriate circuit breaker
- Indoor use only. The altitude of the site of use should be lower than 1000m.
- The site of use should be free from vibration or impact.
- Electrical works required for mounting the product should be done by professionals or qualified personnel.
- Make sure that the packaging is not damaged on delivery. Damages during transportation may lead to product failure. In case any damage is found, contact us immediately.

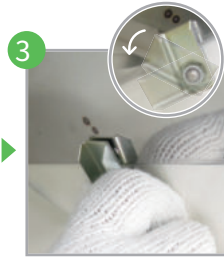
Maintenance



1 Remove the screw with a screw driver.



2 Unlatch the door to open.



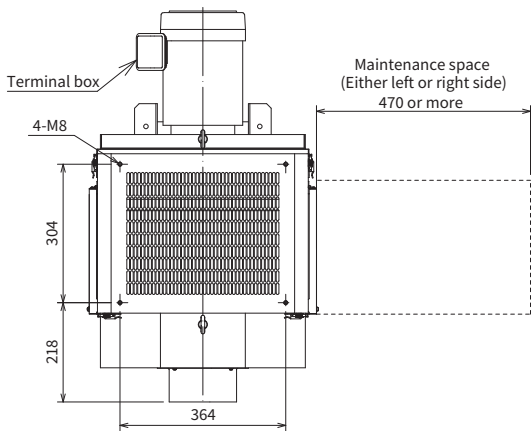
3 Unfix the fasteners of the collection unit.



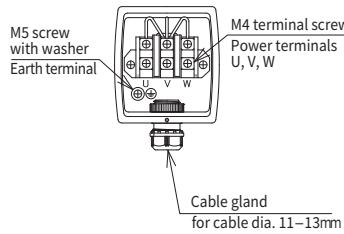
4 Take out the collection unit to clean using a brush or compressed air.

Outline drawing

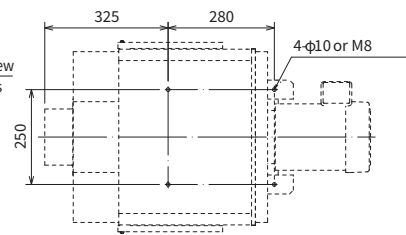
【Main unit】



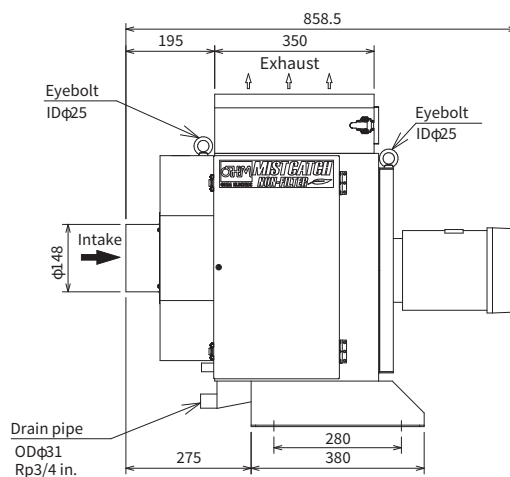
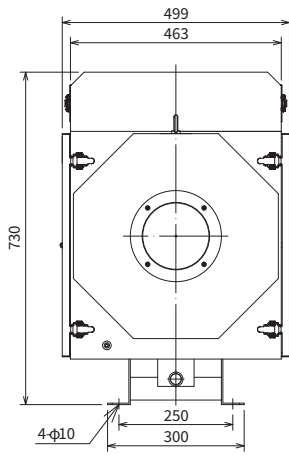
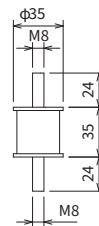
【Terminal box】



Mounting cutout

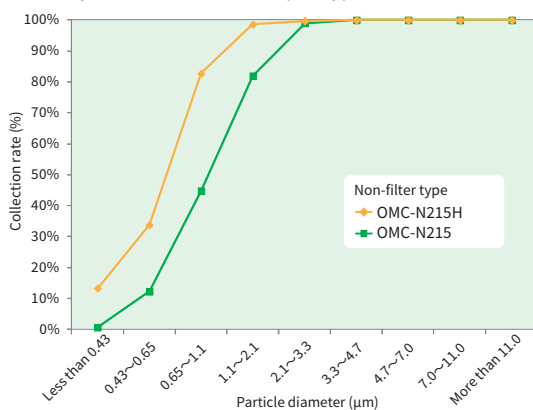


Anti-vibration rubber (Accessory)



Collection rate

Test oil : Water-insoluble cutting oil  
Measured by : Low Volume Air Sampler type AN-200

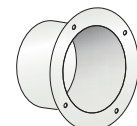


Option

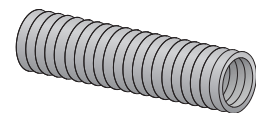


Auto-cleaning unit  
Keeps MISTCATCH interior clean using water and compressed air.

P033



Duct flange



Duct hose

For options See P035

MIST  
CATCH

Non-filter  
oil mist  
collector

Electrostatic  
oil mist  
collector

Filter  
oil mist  
collector

Option

Auto-cleaning  
unit

Non-filter Oil mist collector

# OMC-N225(H)

Industry-leading collection efficiency as a non-filter unit



Top runner motor

RoHS



Collection method



Features



## Model/Specifications

Model	OMC-N225	OMC-N225H
Max. airflow *1	21.5 / 24.5m <sup>3</sup> /min	
Max. static pressure *1	1.88 / 2.57kPa	
Collection efficiency	99% or more (2μm or larger)	99% or more (1μm or larger)
Rated voltage	3-phase, 200VAC, 50Hz/200-220V, 60Hz	
Motor output rating	2.2kW (2P)	
Motor efficiency *2	86.0 / 86.8-86.9% IE3 / IE3-IE3	
Current consumption *1	8.3 / 8.1-7.4A	
Working temperature	0 to +40°C	
Max. working humidity	85%RH, free from condensation	
Noise	74/78dB(A)	
Max. suction air temp.	+80°C	
Conformity	EMC directive	EMI:EM61000-6-4 EMS:EN61000-6-2
	EMD	EN ISO/12100 : 2010 EN60204-1 : 2006+A1 : 2009 Overvoltage category II, Pollution level 3
	Environment	RoHS
Suction port diameter	φ 198mm	
Paint color	Powder coating, Ivory (10GY9/1 equivalent) and Light green (10GY8/4 equivalent)	
Weight	68.0kg	
Drain port	φ 31 pipe	
Standard accessory	2m φ 32 drain hose, 1 drain hose band, 4 anti-vibration rubber, 1 maintenance sticker, 1 instruction manual	

\*1 Rated value in 25°C air temperature

\*2 Efficiency value in a motor single body

### ⚠ Caution

- Be sure to read the instruction manual carefully before use.
- This product is intended for collecting general watersoluble and oil mist that generates during production process using various machine tools. Never have it inhale the following substances.
  - Ignition sources and fire sparks generated in machine processing
  - Flammable substances such as gasoline, thinner, benzene, kerosene and others as well as oil and cleaning liquid with an ignition point 80 degrees C or below,
  - Explosive substances such as aluminium, magnesium and titan as well as materials ridden with those substances,
  - Flammable liquid, mist and materials ridden with these substances,
  - Corrosive and adhesive substances and hazardous gas or air with a lot of unusual substances
  - Dust
  - Hot air exceeding 80 deg. C.
  - Large amount of liquid
  - Substances that remarkably accelerate rusting of metals or aging of plastics
- This product should not be used in an atmosphere which contains chlorine, sulfuric or fluorine gasses, oxalic acid, xylene, or methyl tetrachloride and the like.
- Tampering or repairing the product should be strictly avoided. Please contact us for repairing service.
- Precision apparatuses should not be arranged near the exhaust port where fine particles may fall on.
- Do not operate the product with its terminal box uncovered.
- Electrical connection should be done via an appropriate circuit breaker
- The altitude of the site of use should be lower than 1000m.
- Indoor use only. The site of use should be free from vibration or impact.
- Electrical works required for mounting the product should be done by professionals or qualified personnel.
- Make sure that the packaging is not damaged on delivery. Damages during transportation may lead to product failure. In case any damage is found, contact us immediately.

Maintenance



1 Remove the screw with a screw driver.



2 Unlatch the door to open.



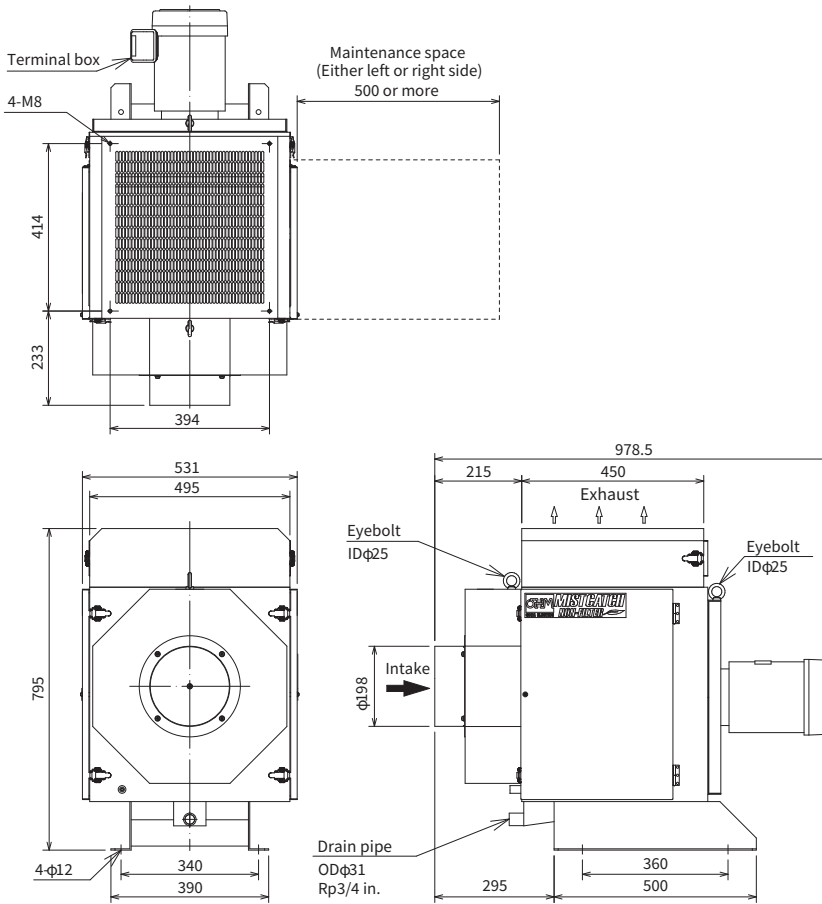
3 Unfix the fasters of the collection unit.



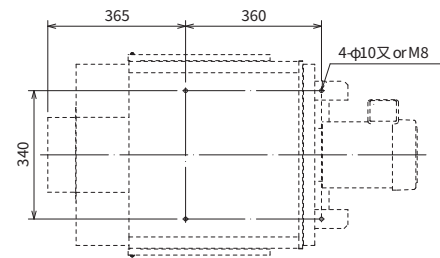
4 Take out the collection unit to clean using a brush or compressed air.

Outline drawing

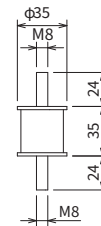
【Main unit】



Mounting cutout

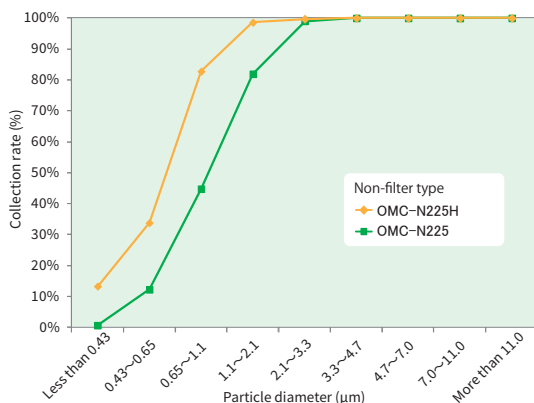


Anti-vibration rubber (Accessory)



Collection rate

Test oil : Water-insoluble cutting oil  
Measured by : Low Volume Air Sampler type AN-200

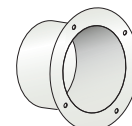


Option

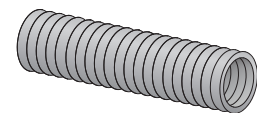


Auto-cleaning unit  
Keeps MISTCATCH interior clean using water and compressed air.

See P033



Duct flange



Duct hose

For options See P035



## OPTION 1

# Option for OMC-N2 series

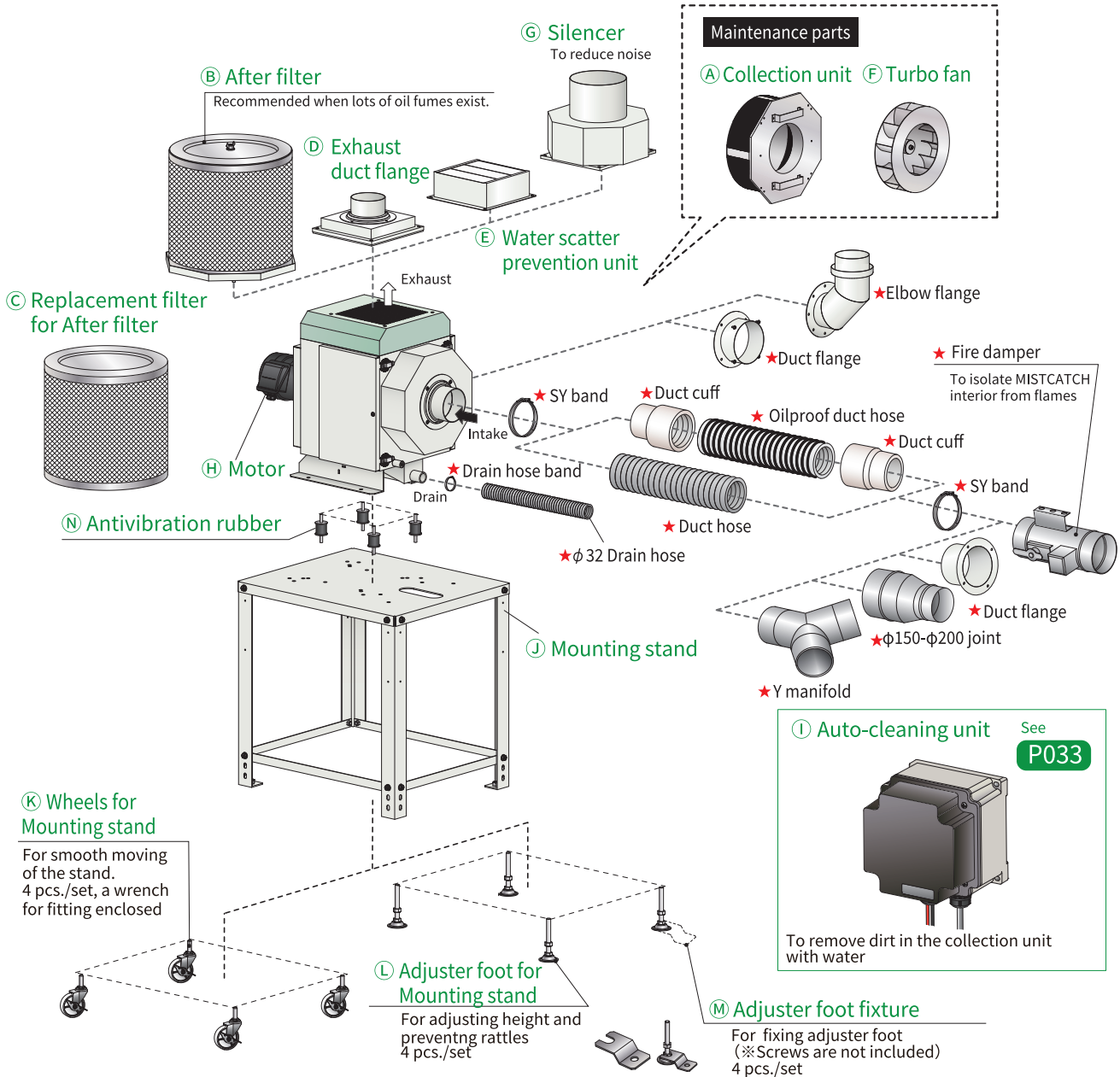
MIST  
CATCH

Non-filter  
oil mist  
collector

Electrostatic  
oil mist  
collector

Filter  
oil mist  
collector

Option



### Option list

Part name	MISTCATCH model							
	OMC-N205	OMC-N205H	OMC-N210	OMC-N210H	OMC-N215	OMC-N215H	OMC-N225	OMC-N225H
Ⓐ Collection unit	OMC-N205-CU12	OMC-N205-CU11	OMC-N210-CU12	OMC-N210-CU11	OMC-N215-CU12	OMC-N215-CU11	OMC-N225-CU12	OMC-N225-CU11
Ⓑ After filter	OMC-N205-F40		OMC-N210-F40		OMC-N215-F40		OMC-N225-F40	
Ⓒ Replacement filter for AF	OMC-AF-335L				OMC-AF-500L			
Ⓓ Exhaust duct flange	OMC-N105-HDF100		OMC-N110-HDF125		OMC-N115-HDF150		OMC-N125-HDF200	
Ⓔ Water scatter prevention cover	OMC-N205-WU		OMC-N210-WU		OMC-N215-WU		OMC-N225-WU	
Ⓕ Turbo fan	OMC-N105-TF1		OMC-N110-TF1		OMC-N115-TF1		OMC-N125-TF1	
Ⓖ Silencer	OMC-N205-SLC2		OMC-N210-SLC2		OMC-N215-SLC2		OMC-N225-SLC2	
Ⓗ Motor	OMC-N205-M40		OMC-N210-M75		OMC-N215-M150		OMC-N225-M220	
Ⓛ Auto-cleaning unit	OMC-ATW-N21 (Single phase, 200VAC 50/60Hz)/OMC-ATW-N22 (Single phase, 220VAC 50/60Hz)							
Ⓣ Mounting stand	OMC-PDS01						OMC-PDS02	
Ⓚ Wheels for Mounting stand	OMC-PDS01-CAS							
Ⓛ Adjuster foot (for Mtg. stand)	OMC-PDS01-AJF							
ⓐ Adjuster foot fixture	OMC-PDS01-AJF-ST							
Ⓨ Antivibration rubber	OMC-N2-BG01							