

■Combination of fitting tools

Choose the winding direction, fixing tools and layout from the followings that suit your oil chiller's shape and installation space paying attention to obstacles.  
※Other combinations not listed herein are invalid.

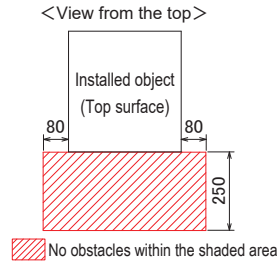
| Fixing tools  | Vertical arrangement   | Horizontal arrangement                                      |
|---|--|---|
| <br>Clamp Stay<br>OKF-CS***-01                            | <br>① Upside Clamp Stay<br>Downside Clamp Stay<br>Winding Case   | <br>② Left Clamp Stay<br>Right Clamp Stay<br>Winding Case   |
| <br>Magnet Stay<br>OKF-MS01                               | <br>③ Upside Magnet Stay<br>Downside Magnet Stay<br>Winding Case | <br>④ Left Magnet Stay<br>Right Magnet Stay<br>Winding Case |
| <br>Magnet Stay<br>OKF-MS01<br>Clamp Stay<br>OKF-CS***-01 | <br>⑤ Upside Magnet Stay<br>Downside Magnet Stay<br>Winding Case | <br>⑥ Left Magnet Stay<br>Right Magnet Stay<br>Winding Case |
| <br>Magnet Stay<br>OKF-MS01<br>Clamp Stay<br>OKF-CS***-01 | <br>⑦ Upside Magnet Stay<br>Downside Magnet Stay<br>Winding Case | <br>⑧ Left Magnet Stay<br>Right Magnet Stay<br>Winding Case |

■Model numbers

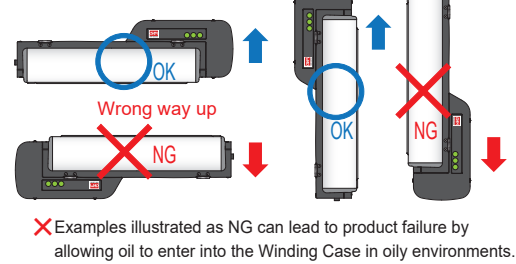
| KURU KURU Filter | Clamp Stay   | Magnet Stay |
|------------------|--------------|-------------|
| OKF-AOC320-AW    | OKF-CS320-01 | OKF-MS01    |
| OKF-AOC430-AW    | OKF-CS430-01 |             |
| OKF-AOC520-AW    | OKF-CS520-01 |             |

Both of Winding Case and Filter Case require respective stays.  
Please make sure to include the stays when purchasing.

■Installation space



■Orientation of Winding Case



**OHM ELECTRIC CO., LTD.**

Head Office : 7000-21 Nakagawa, Hosoe, Kita-ku, Hamamatsu, Shizuoka, 431-1304 Japan  
TEL : +81-53-522-5562 FAX : +81-53-523-2362  
URL : <https://www.ohm.jp/e-index.html>

- The contents of this catalog are subject to change for product improvement without notice.  
- The actual color of the product may differ slightly from the pictures shown.



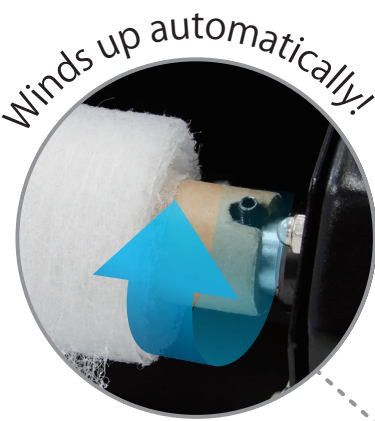
SELF-WINDING FILTER

# KURU KURU Filter



**Automatic rolling up**  
eliminates troublesome filter replacement!

**Oil chiller use** models  
newly joined the lineup



**Maintenance-free**  
**up to 2 years**



Failure rate and energy consumption increase with increase of filter dirt.  
Kuru Kuru Filter ensures **Stable and energy-saving operation of the equipment**

● User-selectable mounting

8 different mounting styles are available by combinations of layout and the Stays  
(\*Not limited to oil chillers)

● Wide input voltage range

Accepts wide input voltage range from 100 to 240 VAC

● Filter performance

The filter combines good trapping performance with air permeability

● Adjustable movement

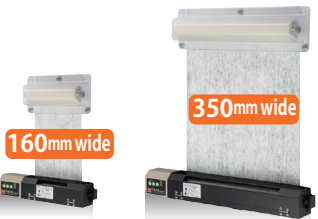
Winding length can be adjusted in 9 levels to meet every environment  
(A filter can last 2 years at maximum)

● Easy serviceability

No tool required for filter replacement

● Compact design

Designed compact to fit oil chiller sizes



OKF-A160-BT OKF-A350-BT



in 3 sizes



**OHM ELECTRIC CO., LTD.**

Model/Specifications

| Model                     | OKF-AOC320-AW   |    | OKF-AOC430-AW                   | OKF-AOC520-AW |
|---------------------------|---|----|---------------------------------|---------------|
| Filter width              | 320mm   |    | 430mm                           | 520mm         |
| Filter length             | 4500mm  |    |                                 |               |
| Collection rate           | *1  | *2 | 35%                             |               |
| Initial pressure loss     |   |    | 8.1Pa                           |               |
| Rated voltage             | Single phase, 100 - 240V AC   |    |                                 |               |
| Rated current consumption | 0.05A (100V AC) / 0.035A (240V AC)  |    |                                 |               |
| Rated power consumption   | 2.5W  |    |                                 |               |
| Mounting method           | Fitting by Clamp Stay/Magnet Stay   |    |                                 |               |
| Filter incombustibility   | JACA No.11A-2003 Class 3  |    |                                 |               |
| Working temperature       | 0 to 50℃  |    |                                 |               |
| Working humidity          | Max. 80%RH, free from condensation  |    |                                 |               |
| Function                  | Winding length setting, Filter replacement warning, Winding error warning, Winding overload warning |    |                                 |               |
| Power connection          | 3-core power cable, 2 m (conductor size 0.75 sq mm) , Finished outer dia. 7.3 mm                    |    |                                 |               |
| Fuse                      | Cartridge glass tube fuse, normal blowout B-type, ϕ 5.2 x 20 mm 250V 2A                             |    |                                 |               |
| Color                     | Black   |    |                                 |               |
| Weight                    | 1.4 kg  |    | 1.6 kg                          | 1.8 kg        |
| Accessories               |   |    | Roll filter                     | 1 pc.         |
|                           |   |    | M4 screw                        | 8 pcs.        |
|                           |   |    | Aluminum pipe for Filter Guide  | 2 pcs.        |
|                           |   |    | Warning sticker                 | 1 pc.         |
|                           |   |    | Setting value sticker           | 1 pc.         |
|                           |   |    | Filter replacement instructions | 1 pc.         |
|                           |   |    | Instruction manual              | 1 copy        |

\*1 : Conforming to JIS9908 Type 3 (weighing method) at wind speed of 2.0 m/sec

\*2 : By weighing method (Test powder JIS Z8901 type 15, dust density 1.0 g/min)

Winding length

Filter winding length can be set in 9 different levels to suit your need.

| Set value | Winding length per day * | Days to complete winding up |
|-----------|--------------------------|-----------------------------|
| 1         | 5.5 mm                   | 720 days (approx. 2 yrs)    |
| 2         | 7.0 mm                   | 540 days (approx. 1.5 yrs)  |
| 3         | 10.5 mm                  | 360 days (approx. 1 yr)     |
| 4         | 14.0 mm                  | 270 days (approx. 9 mos)    |
| 5         | 21.0 mm                  | 180 days (approx. 6 mos)    |
| 6         | 31.5 mm                  | 120 days (approx. 4 mos)    |
| 7         | 42.5 mm                  | 90 days (approx. 3 mos)     |
| 8         | 63.5 mm                  | 60 days (approx. 2 mos)     |
| 9         | 127.0 mm                 | 30 days (approx. 1 mo)      |

\* winds up the filter several times a day.

Filter specifications

The filter used in this product corresponds to JACA No.11A-2003 Class 3 inflammability test.

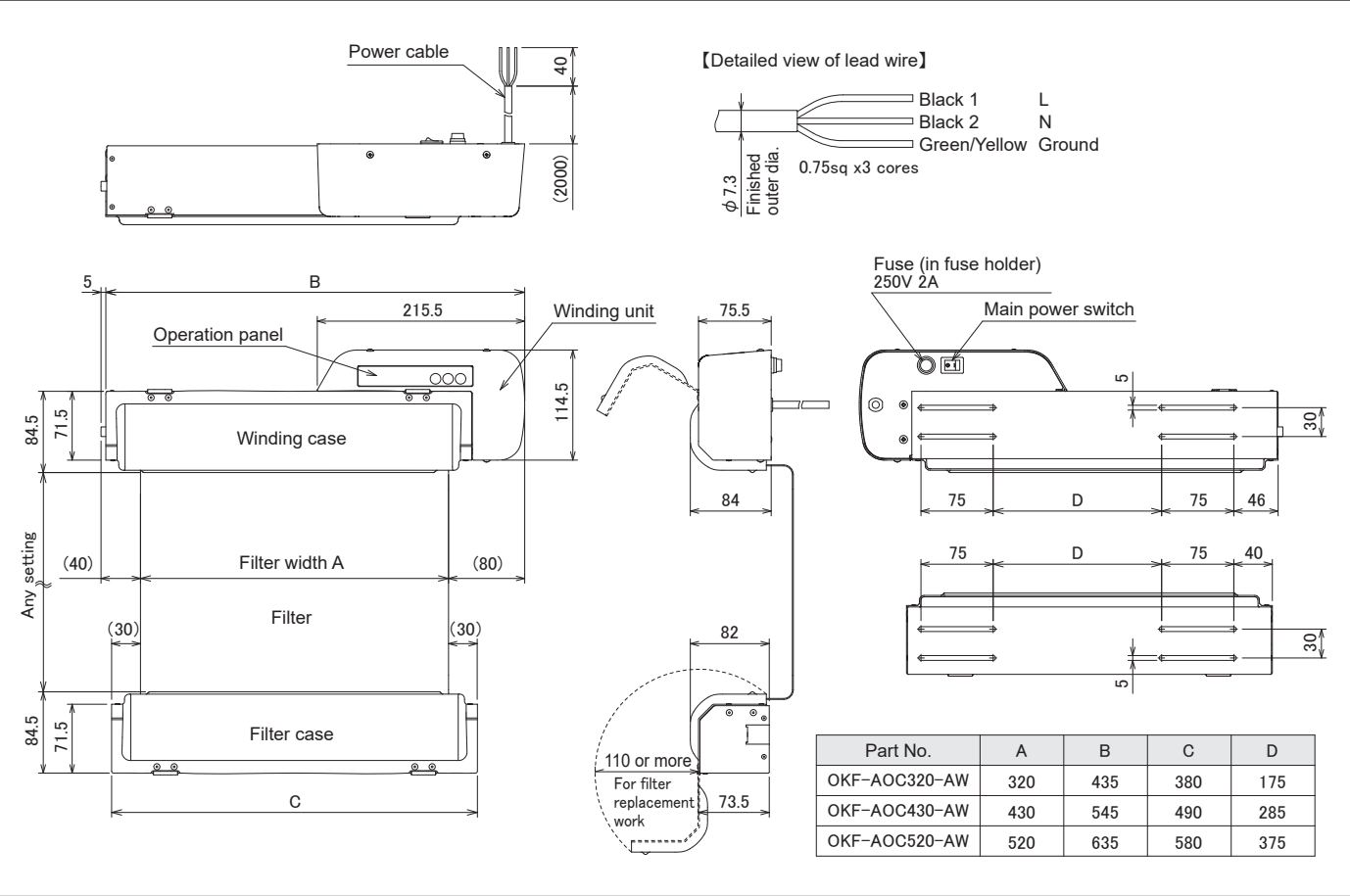
|         | Afterflame time (s)                                    | Afterglow time of all test specimens (s) | Ignition of marking cotton by melting droplets | Combustion distance of all test specimens Ld (mm) |
|---------|--|--|--|---|
| Class 3 | 2s or less for 4/5 (≦2s)<br>10s or less for 1/5 (≦10s) | 30s or less (≦30s)                       | None   | 35mm or less (≦35)                                |

Consumable parts

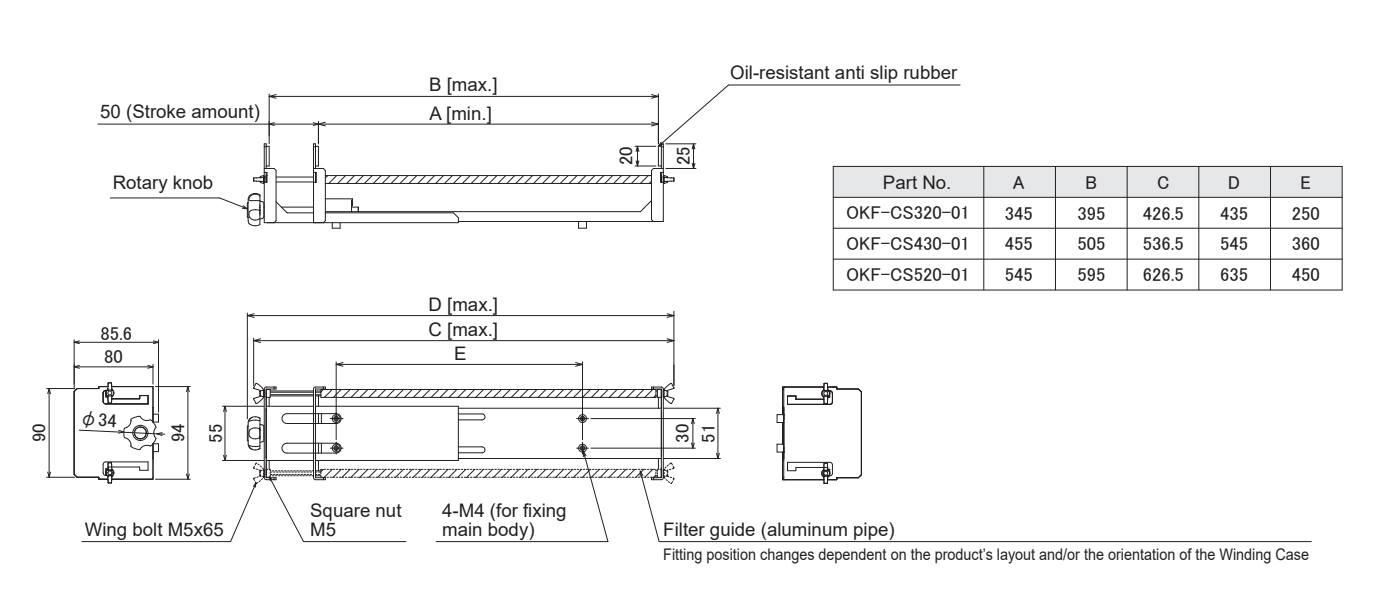
Replacement filter

| Part No.    | Applicable product | Purchase unit |
|-------------|--------------------|---------------|
| OKF-F320-OC | OKF-AOC320-AW      | 1 pc.         |
| OKF-F430-OC | OKF-AOC430-AW      |               |
| OKF-F520-OC | OKF-AOC520-AW      |               |

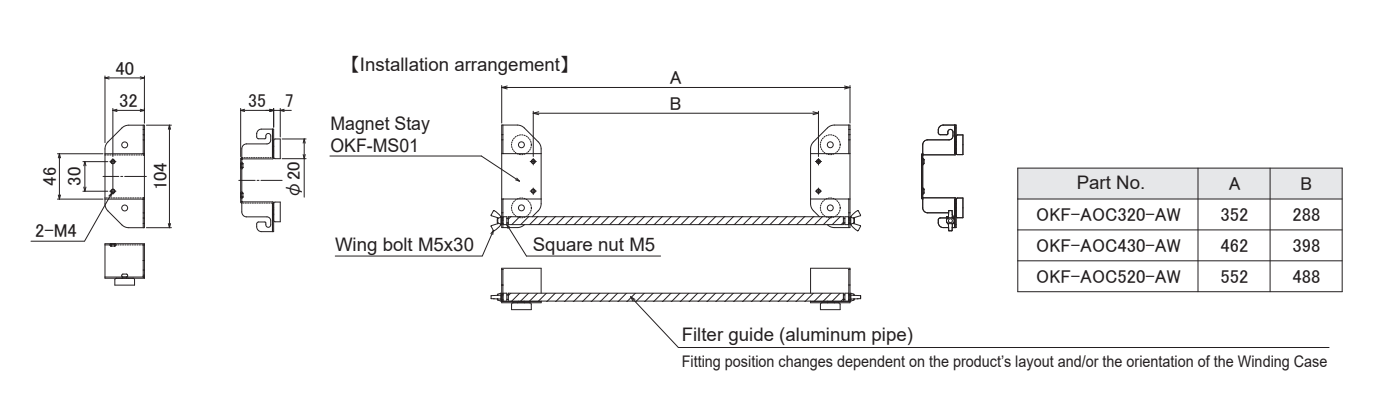
Dimensional drawing



Option - Clamp Stay



Option - Magnet Stay

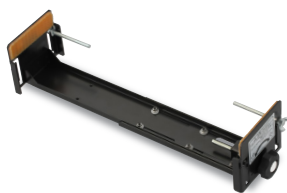


<Caution> Optional Clamp Stays and/or Magnet Stays are required to install this product. (Unable to fix it without fittings)

This product can be installed by using either Clamp Stay or Magnet Stay only or by using both of Clamp Stay and Magnet Stay.

For combinations, please see the reverse side of this brochure.

Clamp Stay (Option)



| Part No.              | OKF-CS320-01                                 | OKF-CS430-01  | OKF-CS520-01  |
|-----------------------|--|---------------|---------------|
| Applicable product    | OKF-AOC320-AW                                | OKF-AOC430-AW | OKF-AOC520-AW |
| Fixation method       | Clamping                                     |               |               |
| Attachment to product | Screw fixing with 4 M4 screws                |               |               |
| Color                 | Black  |               |               |
| Weight                | 1.0 kg                                       |               |               |
| Accessories           | Wing bolt M5×65 2 pcs., Square nut M5 2 pcs. |               |               |
| Purchase unit         | 1 pc.  |               |               |

Magnet Stay (Option)



| Part No.              | OKF-MS01                                     |               |               |
|-----------------------|--|---------------|---------------|
| Applicable product    | OKF-AOC320-AW                                | OKF-AOC430-AW | OKF-AOC520-AW |
| Fixation method       | By magnets                                   |               |               |
| Attachment to product | Screw fixing with 2 M4 screws                |               |               |
| Color                 | Black  |               |               |
| Weight                | 0.3kg (2 pcs/set)                            |               |               |
| Accessories           | Wing bolt M5×30 2 pcs., Square nut M5 2 pcs. |               |               |
| Purchase unit         | 2 pcs/set                                    |               |               |